

TECHNICAL DATA

MATERIAL HANDLER | F-SERIES

MHL370



230 kW



49.2–54.3t



up to **18.2 m**



FUCHS
A TEREX BRAND



TOUGH JOB, ROUGH TERRAIN? BRING IT ON!

Our New MHL370 F is designed for heavy duty applications that require extra power, stability and toughness.

Feeding mega shredders or dumper, loading and unloading barges. You name it, the MHL370 F has it covered.





Hose Rupture Safety Valves with Regeneration Function

- Standard safety feature for boom and stick cylinder
- Improved efficiency
- Responsive boom and stick response

Double Pivot Bearings

- Optimized application of force
- Excellent durability

Single Solid Tires

- 59" for increased offroad capability
- HD design for superb durability

Massive HD Undercarriage

- Outstanding durability
- More stability

MHL370 F. 370 REASONS FOR A FUCHS.

Here are just a few.

AC Condenser

- Separated from the cooling system
- Dust protected
- Individual fans for power on demand

Cabin

- Modular cab riser systems
- Sliding door for safe access

Fuchs Service Platform

- Unique in its business
- Safe and comfortable access to engine, filters, etc.

High Performance Cooling System

- Physically separated
- Huge coolers and direct airflow for outstanding cooling capacity

Big Counterweight

- Extra stability
- Still a small swingtail radius

Engine

- 230 kW for more agility
- One of the best fuel efficiency

EQUIPMENT AND OPTIONS.

Bespoke Technology, Tailored For You.



Joystick Steering

- Improved visibility
- More legroom and comfort



Rear and Side View Cameras

- Nightvision as an extra safety feature
- 360° surround view system on demand



7" Multi-Function Touch Display

- Easy and intuitive operation
- Full monitoring of the machine data



Float Switch*

- Lifts the boom automatically if too much pressure is applied
- Protects sensitive surfaces like the floor of barges



Attachment Filter*

- High pressure filter with monitoring
- Effective protection against hydraulic oil contamination



Tracked Undercarriage*

- Even more stability
- Less ground pressure
- Flat shoes or triple grousers

* special equipment on demand

THE NEW FUCHS CABIN.

Handling of rough materials made easy and comfortable.

The design motif of the Fox Cab is the mammal from which it takes its name. The silhouette of the fox's head is reflected subtly in the stylistic idioms. This design produces an unmistakable branding effect. The aim is not only brand recognition, but also to make a connection with the machine operator: repeating, familiar elements elevate the emotional bond to the product. The Fox Cab

has been specially designed for loading machines and did not have to be subjected to any compromises as a result. This provides the user with great benefits in terms of ergonomics.



Multi-function Touch Monitor

- Central operating terminal for all functions
- Large, easily legible display
- Ergonomically positioned at ideal height and distance

Downward-facing Windshield

- Improved visibility for use as a handling machine
- Additional shading from solar radiation
- Shielding effect also provides excellent visibility in the rain

Spacious Refrigeration Compartment

- In characteristic fox-head shape
- Provides space for drinks, snacks, and medicines

Perfect Space Utilization

- Spacious storage options and deep stowage compartments
- Thoughtful smartphone holder with charger
- Simple cleaning due to avoidance of brackets and tight corners

Skylight

- Shape and size provide best-possible visibility in terms of usage conditions of a handling machine
- Allows as little sunlight as possible into the cab

Unique Sliding Door

- Highly convenient access through above average-sized entry hatch.



TECHNICAL DATA

SERVICE WEIGHT WITHOUT ATTACHMENT

MHL370 F	49.2–54.3 t
----------	-------------

DIESEL ENGINE

Manufacturer and model	Deutz TCD 7.8 L6 4V
Design	6-cylinder inline
Engine control	EMR IV
Type	4-stroke diesel, common rail direct injection, turbo-charger, controlled exhaust gas recirculation, diesel particulate filter with automatic regeneration and SCR-cat
Engine output	230 kW
Nominal speed	2,000 min ⁻¹
Displacement	6,6 l
Cooling system	Combi-cooler (coolant/charge air) with fan speed control system; optional reversing function
Emission standard	Stage IV / EPA Tier 4 final
Air filter design	Two-stage filter with safety cartridge and pre-separator with discharge valve
Usable tank capacity	Diesel tank: 580 l, AdBlue (DEF) tank: 50 l

ELECTRICAL SYSTEM

Generator	28 V / 100 A
Operating voltage	24 V
Battery	2 × 12 V / 110 Ah / 750 A
Lighting set	2 × H3 headlamps, turn indicators and tail lights
Option	20 kW or 30 kW DC generator with controls and insulation monitoring, driven by V-belt direct from diesel engine

TRANSMISSION

Hydrostatic travel drive via infinitely variable axial piston motor with directly mounted travel brake valve, two-speed manual gearshift, 4-wheel drive

Maximum speed 1st gear	max. 5 km/h
Maximum speed 2nd gear	max. 15 km/h
Gradeability	max. 30 %
Turning radius	8.0 m

SLEWING GEAR

Swing gear	Internally toothed double-row ball ring gear
Drive	3-stage planetary gear with integrated multi-disc brake
Swing speed	0–6 min ⁻¹ infinitely variable
Swing lock	Electrically operated
Max. pivot torque	91 kNm

UNDERCARRIAGE

Front axle	Planetary drive axle with integrated drum brake, rigidly mounted, max. steering angle 27°
Rear axle	Oscillating planetary drive rear axle with integrated drum brake and selectable oscillating axle lock
Stabilizers	4-point stabilizers
Tires	Solid rubber 18,50" × 59" (SETCO)

BRAKE SYSTEM

Service brake	Hydraulic single-circuit braking system, acting on all wheels
Parking brake	Electrically operated disc brake on transmission, acting on both front and rear axles

HYDRAULIC SYSTEM

BOSCH-REXROTH mobile hydraulic system with load limit control and fuel-saving power demand control; closed swing circuit; hose rupture valves with regeneration on the lift and stick cylinders for fuel-efficient work

Cooling system	Separated cooler with fan speed control system; optional reversing function
Hydraulic oil filter	Integral return filter in oil tank for work hydraulics, with 3000 operating hrs service interval; oil filtration on closed swing circuit
Max. pump capacity	2 × 280 l/min & 1 × 140 l/min (for swing operation)
Max. operating pressure	320 / 360 bar
Hydraulic oil tank	535 l usable tank capacity

OPERATOR CAB

Cab raising system	Infinitely variable hydraulically elevatable with max. eye level of 6.29 m (option: independent forward movement of up to 2.20 m) Sound-deadened; heat-insulated windows; windshield with pull-down sunblind that slides under the cab roof; viewing window on cab roof; sliding window in cab door, sliding door.
Air-conditioning	Automatic air-conditioning. Infinitely variable heating with 8-speed fan, 10 adjustable air nozzles, 3 defroster nozzles (hot water system).
Operator's seat	Air-cushioned comfort-seat with integrated headrest, safety belt and lumbar support, seat heating with integrated A/C function optional. Comfortable operation with multi-purpose adjustment options for seat position, seat inclination, seat cushion placement in relation to armrests and pilot control units
Monitoring	Ergonomic layout; anti-glare instrumentation. Multi-function display, automatic monitoring and recording of abnormal operating conditions (including all hydraulic oil filters, hydraulic oil temperature (cold/hot) – coolant temperature and charge air temperature – diesel particulate filter load), visual and audible warning indication with shutdown of pilot controls/engine power reduction. Diagnosis of individual sensors possible via the multifunction display. Rear view camera and side view camera.
Acoustic power level	LW(A) = 102 dB(A)

OFFICIAL HOMOLOGATION

Certified in accordance with CE regulations



EQUIPMENT

ENGINE	Standard	Option
Exhaust gas turbocharger	●	
Charge air cooling	●	
Direct electronic fuel injection/common rail	●	
Automatic idle	●	
Engine preheating		●
Engine diagnostics interface	●	
System-controlled fan drive with fan speed monitoring	●	

UNDERCARRIAGE

All-wheel drive with differential	●	
Drum brakes	●	
Rear axle oscillating lock	●	
2-speed powershift transmission	●	
4-point stabilizers	●	
Stabilizer cylinders with integrated safety check valves	●	
Piston rod protection on stabilizer cylinders	●	
Stabilizer plates 510 x 565 mm	●	
4-point stabilizers, individually controllable		●
Tool box	●	
Special paint (customer paint work)		●

UPPERCARRIAGE

Separate cooling systems (combi-cooler for engine and hydraulic oil cooler)	●	
Cooling system fan speeds controlled by operating parameters	●	
Fan drive reversing function		●
Lockable maintenance hatches, with gas struts	●	
Automatic central lubrication system	●	
Rear view camera	●	
Side view camera	●	
Travel alarm		●
Electric refuelling pump		●
Lighting protection		●
Special paint (customer paint work)		●
Cyclone prefilter		●
Hydraulically adjustable cab	●	
Cab system horizontally and vertically adjustable		●
3-layer glass with protection film	●	

CAB	Standard	Option
Sliding window in cab door	●	
Glazed roof panel	●	
Reinforced glass (windscreen and roof panel)		●
Windshield washer system	●	
Roof washer system		●
Air-cushioned operator seat with headrest, seatbelt, and lumbar support	●	
Seat heating with integrated A/C function		●
Joystick steering	●	
Steering column, height and tilt adjustable		●
Automatic air conditioning system	●	
Independent heating system		●
Multi-function display	●	
Document clip	●	
Protective grilles to front and roof		●
12V transformer		●
Radio USB & Bluetooth		●
12V socket	●	
Fire extinguisher, dry powder		●

EQUIPMENT

20 kW DC generator with controls and insulation monitoring		●
30 kW DC generator with controls and insulation monitoring		●
Close proximity range limiter for dipperstick	●	
Coolant and hydraulic oil level monitoring system	●	
Filter system for attachments		●
Hose rupture valve for boom cylinder	●	
Hose rupture valve for stick cylinder	●	
Overload warning device		●
Quick coupling on dipperstick	●	
Dipperstick impact protection		●
Active cyclone prefilter (TOP AIR)		●
Hydraulic oil preheating 230 V		●
Float switch for barge unloading		●
Lubrication of the grab suspension by central lubrication system	●	
H3 front headlights	●	
Light packages LED		●
Fuchs Telematics System		●

Further optional equipment available on request!



MHL 370 F-SERIES | www.terex-fuchs.com

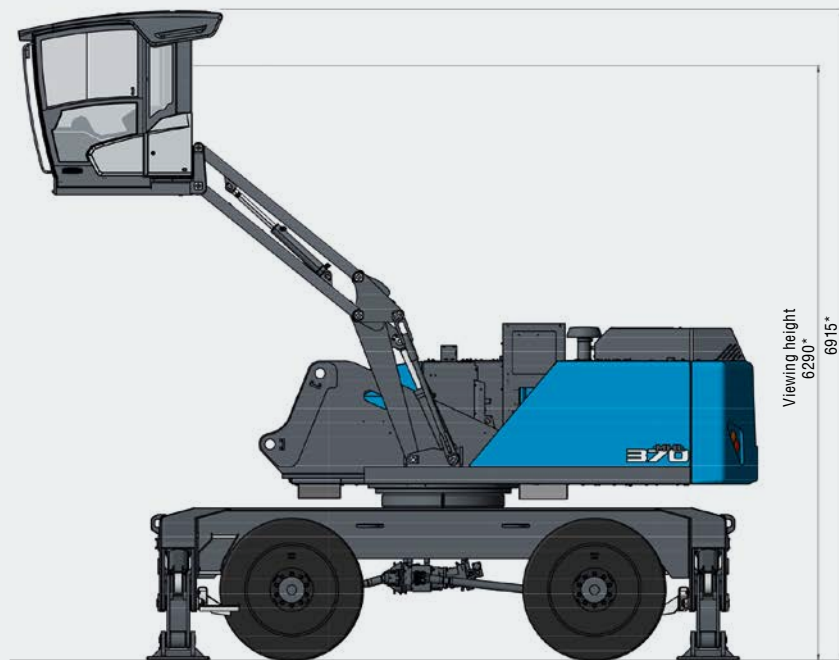
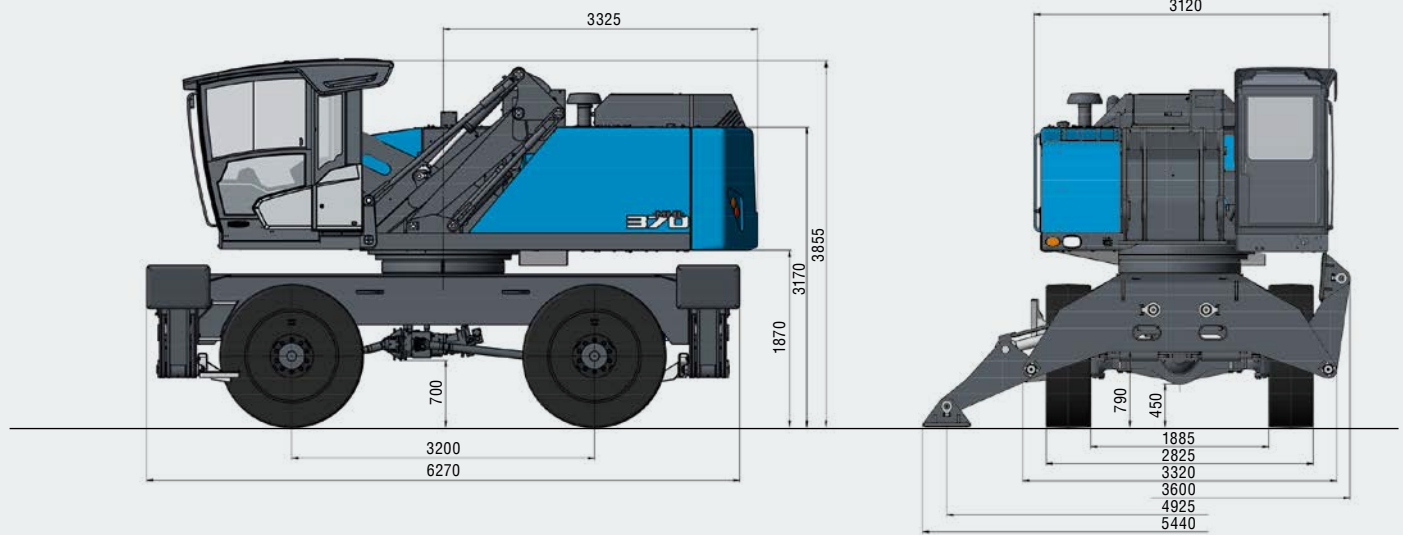
MHL370



FUCHS
A TEREX BRAND

DIMENSIONS

All dimensions in mm

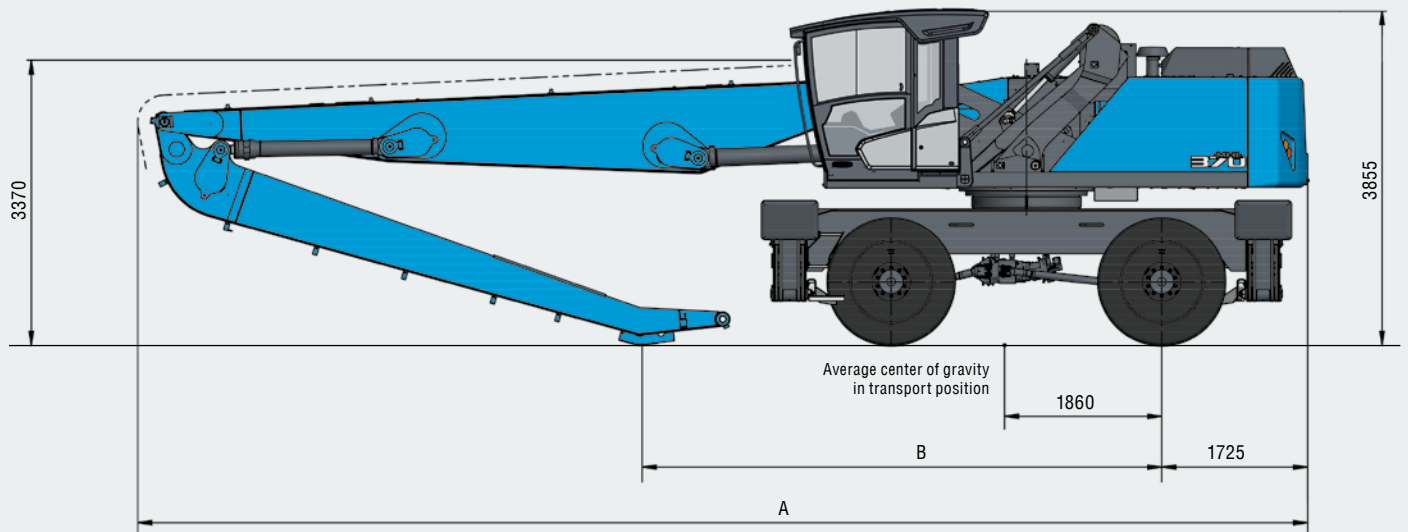


* Cab lift system optional



TRANSPORT DIMENSIONS

All dimensions in mm



Dimensions	Reach 16.7 m	Reach 18.2 m
A	13835	14645
B	6145	6175

WORKING RANGE

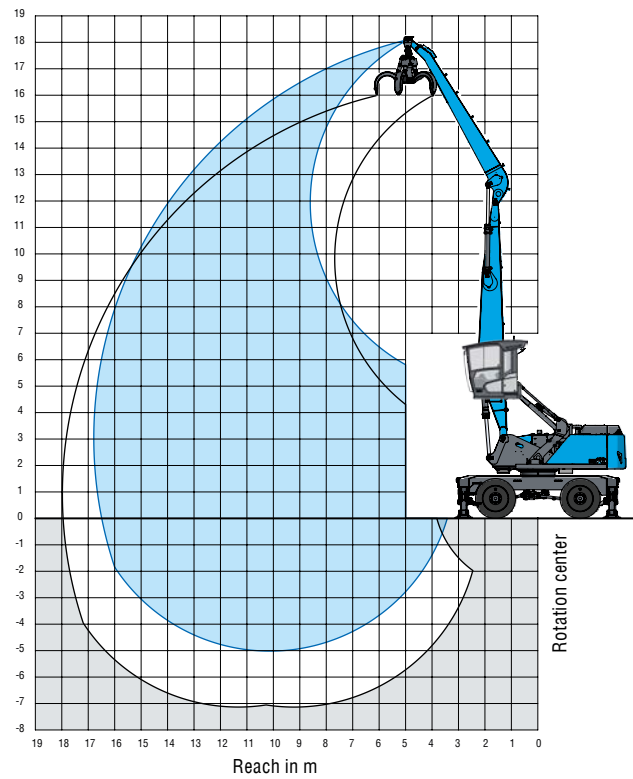
REACH 16.7 M WITH DIPPER STICK

Loading equipment	Boom 8.9 m Dipper stick 7.0 Multi-tine grapple
--------------------------	--

RECOMMENDED ATTACHMENTS

Fuchs multi-tine grapple 0.6 m³	Open or half-closed
Fuchs multi-tine grapple 0.8 m³	Open or half-closed
Fuchs magnetic plate MP 1350	dia = 1350 mm with 30 kW magnet system
Clamshell grab 1.4 m³	Density of materials handled up to 1,600 kg/m ³
Clamshell grab 2.0 m³	Density of materials handled up to 800 kg/m ³
Lift hook	20 t

The lift capacity values are stated in metric tons (t). The pump pressure is 360 bar. In accordance with ISO 10567 the lift capacity values represents 75% of the static tipping loads or 87% of the hydraulic lifting force (marked °). On solid and level ground the values apply to a swing range of 360°. The (...) values apply in the longitudinal direction of the undercarriage. The values for "not supported" only apply via the steering axle or the locked oscillating axle. The weights of the attached load hoisting equipment (grab, load hook, etc.) must be deducted from the lift capacity values. The working load of the lifting device must be observed. In accordance with the EN 474-5 for object handling application hose rupture valves on the boom and stick cylinders, an overload warning device and the lift capacity table in the cab are required. For object handling application the machine has to be supported on a level ground.



LIFTING CAPACITY

Height [m]	Undercarriage outrigger	Reach [m]								
		6	7.5	9	10.5	12	13.5	15	16.5	
16.5	4-point supported		8.7° (8.7°)	6.0° (6.0°)						
15	4-point supported			8.8° (8.8°)	6.7° (6.7°)					
13.5	4-point supported			9.9° (9.9°)	8.6° (8.6°)	6.5° (6.5°)				
12	4-point supported			10.4° (10.4°)	9.3° (9.3°)	8.3° (8.3°)	5.6° (5.6°)			
10.5	4-point supported			10.4° (10.4°)	9.3° (9.3°)	8.4° (8.4°)	7.6° (7.6°)			
9	4-point supported			10.7° (10.7°)	9.5° (9.5°)	8.5° (8.5°)	7.7° (7.7°)	6.0° (6.0°)		
7.5	4-point supported		13.1° (13.1°)	11.2° (11.2°)	9.8° (9.8°)	8.7° (8.7°)	7.6° (7.7°)	6.4° (6.9°)		
6	4-point supported	16.2° (16.2°)	14.1° (14.1°)	11.7° (11.7°)	10.1° (10.1°)	8.8° (8.8°)	7.5° (7.8°)	6.3° (6.9°)	3.9° (3.9°)	
4.5	4-point supported	19.7° (19.7°)	15.1° (15.1°)	12.3° (12.3°)	10.4° (10.4°)	8.8° (8.9°)	7.3° (7.8°)	6.2° (6.8°)	4.9° (4.9°)	
3	4-point supported	20.0° (20.0)	15.8° (15.8°)	12.7° (12.7°)	10.4° (10.5°)	8.5° (9.0°)	7.1° (7.7°)	6.1° (6.6°)	5.3° (5.4°)	
1.5	4-point supported	10.8° (10.8°)	15.9° (15.9°)	12.5° (12.7°)	10.0° (10.5°)	8.3° (8.9°)	7.0° (7.5°)	6.0° (6.4°)	5.0° (5.0°)	
0	4-point supported	8.9° (8.9°)	15.3° (15.3°)	12.1° (12.3°)	9.8° (10.2°)	8.1° (8.5°)	6.9° (7.2°)	5.9° (5.9°)		
-1.5	4-point supported	9.0° (9.0°)	13.9° (13.9°)	11.4° (11.4°)	9.5° (9.5°)	7.9° (7.9°)	6.5° (6.5°)	5.1° (5.1°)		
-3	4-point supported	9.8° (9.8°)	11.9° (11.9°)	10.0° (10.0°)	8.3° (8.3°)	6.9° (6.9°)	5.5° (5.5°)			
-4.5	4-point supported			8.0° (8.0°)	6.7° (6.7°)	5.4° (5.4°)				
									Max. reach 16.7 m	
3.1	4-point supported									4.0° (4.0°)



WORKING RANGE

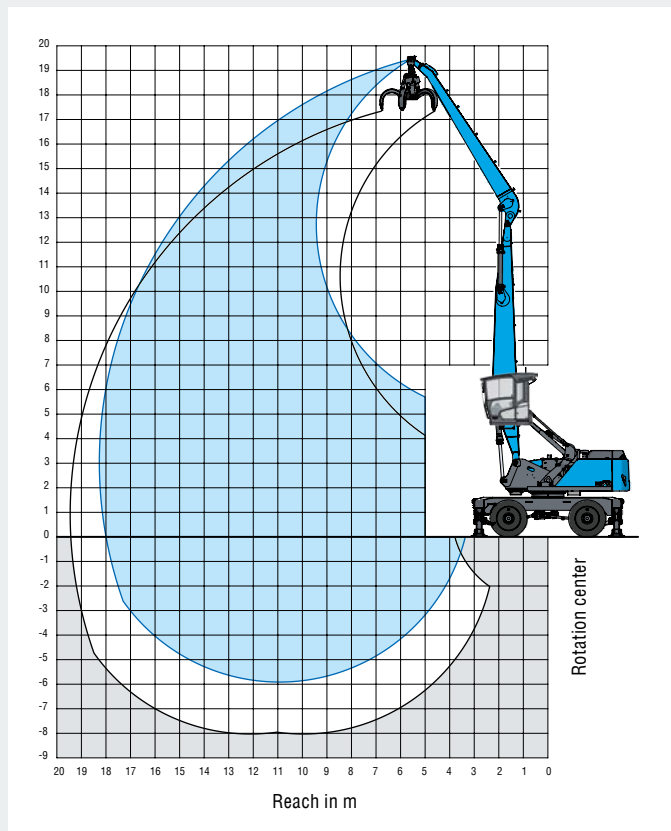
REACH 18.2 M WITH DIPPER STICK

Loading equipment	Boom 9.7 m
	Dipper stick 7.8 m
	Multi-tine grapple

RECOMMENDED ATTACHMENTS

Fuchs multi-tine grapple 0.6 m ³	Open or half-closed
Fuchs multi-tine grapple 0.8 m ³	Open or half-closed
Fuchs magnetic plate MP 1350	dia = 1350 mm with 30 kW magnet system
Clamshell grab 1.4 m ³	Density of materials handled up to 1,600 kg/m ³
Clamshell grab 2.0 m ³	Density of materials handled up to 800 kg/m ³
Lift hook	20 t

The lift capacity values are stated in metric tons (t). The pump pressure is 360 bar. In accordance with ISO 10567 the lift capacity values represents 75% of the static tipping loads or 87% of the hydraulic lifting force (marked °). On solid and level ground the values apply to a swing range of 360°. The (...) values apply in the longitudinal direction of the undercarriage. The values for "not supported" only apply via the steering axle or the locked oscillating axle. The weights of the attached load hoisting equipment (grab, load hook, etc.) must be deducted from the lift capacity values. The working load of the lifting device must be observed. In accordance with the EN 474-5 for object handling application hose rupture valves on the boom and stick cylinders, an overload warning device and the lift capacity table in the cab are required. For object handling application the machine has to be supported on a level ground.



LIFTING CAPACITY

Height [m]	Undercarriage outrigger	Reach [m]										
		6	7.5	9	10.5	12	13.5	15	16.5	18		
18	4-point supported		8.2° (8.2°)	6.3° (6.3°)								
16.5	4-point supported			8.2° (8.2°)	6.7° (6.7°)							
15	4-point supported				8.1° (8.1°)	6.6° (6.6°)						
13.5	4-point supported				8.8° (8.8°)	7.9° (7.9°)	6.3° (6.3°)					
12	4-point supported				8.8° (8.8°)	7.9° (7.9°)	7.2° (7.2°)	5.5° (5.5°)				
10.5	4-point supported				8.9° (8.9°)	8.0° (8.0°)	7.3° (7.3°)	6.6° (6.6°)	3.9° (3.9°)			
9	4-point supported			10.3° (10.3°)	9.1° (9.1°)	8.1° (8.1°)	7.3° (7.3°)	6.5° (6.6°)	5.5° (5.5°)			
7.5	4-point supported		12.1° (12.1°)	10.8° (10.8°)	9.4° (9.4°)	8.3° (8.3°)	7.4° (7.4°)	6.5° (6.6°)	5.5° (6.9°)			
6	4-point supported	14.1° (14.1°)	13.7° (13.7°)	11.4° (11.4°)	9.7° (9.7°)	8.5° (8.5°)	7.5° (7.5°)	6.3° (6.7°)	5.4° (5.9°)	3.7° (3.7°)		
4.5	4-point supported	19.3° (19.3°)	14.7° (14.7°)	11.9° (11.9°)	10.0° (10.0°)	8.7° (8.7°)	7.3° (7.6°)	6.2° (6.7°)	5.3° (5.8°)	4.5° (4.5°)		
3	4-point supported	19.9° (19.9°)	15.4° (15.4°)	12.3° (12.3°)	10.2° (10.2°)	8.5° (8.7°)	7.1° (7.6°)	6.1° (6.6°)	5.2° (5.7°)	4.6° (4.7°)		
1.5	4-point supported	8.1° (8.1°)	15.6° (15.6°)	12.4° (12.4°)	9.9° (10.3°)	8.2° (8.7°)	6.9° (7.4°)	5.9° (6.4°)	5.2° (5.5°)	4.3° (4.3°)		
0	4-point supported	6.8° (6.8°)	14.9° (14.9°)	11.9° (12.1°)	9.6° (10.0°)	8.0° (8.4°)	6.8° (7.2°)	5.8° (6.1°)	5.1° (5.1°)			
-1.5	4-point supported	7.0° (7.0°)	12.5° (12.5°)	11.3° (11.3°)	9.4° (9.4°)	7.8° (8.0°)	6.6° (6.7°)	5.6° (5.6°)	4.5° (4.5°)			
-3	4-point supported	7.6° (7.6°)	12.1° (12.1°)	10.1° (10.1°)	8.5° (8.5°)	7.2° (7.2°)	6.0° (6.0°)	4.9° (4.9°)	3.6° (3.6°)			
-4.5	4-point supported		9.8° (9.8°)	8.5° (8.5°)	7.2° (7.2°)	6.1° (6.1°)	5.0° (5.0°)	3.8° (3.8°)				
										Max. reach 18.2 m		
3.1	4-point supported										3.8° (3.8°)	

MODULAR SYSTEM

Attachments			Work equipment	
Furthermore: Timber grapple Scrap shears Magnet plate Load hook	Multi-tine grapple		Work equipment straight	
	Clamshell grab		Work equipment with banana boom	

Uppercarriage MHL370

Cab system hydraulically adjustable Viewing height: max. 6.1 m 		Cab system vertically and horizontally adjustable Viewing height: max. 6.1 m and 2.2 m
--	--	--

Engine		Options		
Diesel engine 	Electric motor 	Cable reel 	Cable drum 	Power Pack

Undercarriage				
Pylon up to max. 0.8 m 	Pylon up to max. 1.4 m 	Pylon up to max. 0.8 m 	Pylon up to max. 3.7 m 	Pylon up to max. 3.7 m
Mobile: Standard-undercarriage	Mobile special: For extended undercarriage	Crawler: Standard-undercarriage	Crawler: XL-undercarriage	Pedestal undercarriage

MHL370 F: SELECT YOUR OPTIONS.

BASIC UNIT	Standard	CABIN	Add option
Air Conditioner	●	Protection installation driver's cab	<input type="checkbox"/>
Hydraulically height adjustable cabin	●	Powder fire extinguisher with holder inside the cab	<input type="checkbox"/>
Cabin standard (reinforced steel construction)	●	Roof washer system	<input type="checkbox"/>
Automatic engine switch-off function	●	Pedal for swingbreak lock	<input type="checkbox"/>
Loading equipment 16.7 m reach (boom 8.9 m, stick 7.0 m)	●	Voltage converter 12 V (incl. 2.5 m cable)	<input type="checkbox"/>
Powershift transmission	●	Radio USB & Bluetooth	<input type="checkbox"/>
Joystick steering	●	Air-conditioned seat with heating	<input type="checkbox"/>
Standard colour	●	Joystick steering & driving	<input type="checkbox"/>
Single solid rubber tyres (SETCO) 18.50" × 59"	●	Joystick steering & driving · cab floor with glass window	<input type="checkbox"/>
Chassis with 4-point outriggers	●	Special joystick function (detailed plan for joystick functions necessary)	<input type="checkbox"/>
Air-cushioned comfort seat	●	Mechanically switchable joystick-functions	<input type="checkbox"/>
Rear view camera and side view camera	●		
Rupture valves for lifting and stick cylinders	●		
ENGINE		ASSISTANCE SYSTEMS	
Diesel engine	<input type="checkbox"/>	Overload and work area control (incl. reach / high limitation, overload warning device and overload switch-off device)	<input type="checkbox"/>
Electric engine	<input type="checkbox"/>	Overload warning device basic (without angle sensors)	<input type="checkbox"/>
Engine pre-heating	<input type="checkbox"/>	Travel alarm with flashing alarm light with acoustic warning signal	<input type="checkbox"/>
UNDERCARRIAGE		FURTHER OPTIONS	
Standard mobile	<input type="checkbox"/>	Reversible fan for hydraulic oil cooler and water- / intercooler	<input type="checkbox"/>
Crawler	<input type="checkbox"/>	Float switch	<input type="checkbox"/>
Crawler gantry	<input type="checkbox"/>	Filtration system for attachments	<input type="checkbox"/>
Pylon	<input type="text" value=""/> m	Electric refuelling pump	<input type="checkbox"/>
4 point stabilizers, individually controllable	<input type="checkbox"/>	Generator 20 kW	<input type="checkbox"/>
LOADING EQUIPMENTS		Generator 30 kW	<input type="checkbox"/>
Boom cylinder damping system (piston accumulator)	<input type="checkbox"/>	Bio-hydraulic oil PANOLIN HLP SYNTH 46 (first filling)	<input type="checkbox"/>
Loading equipment 18 m reach	<input type="checkbox"/>	Hydraulic-oil XTREME TEMP (first filling)	<input type="checkbox"/>
Loading equipment 20 m reach	<input type="checkbox"/>	Engine pre-heating*	<input type="checkbox"/>
LIGHTS		Hydraulic oil pre-heating*	<input type="checkbox"/>
Light package LED (for boom stick or cabin)	<input type="checkbox"/>	Stick protection	<input type="checkbox"/>
Head lamp and flashlight protector	<input type="checkbox"/>	Telematics System (2 years duration, renewable on demand)	<input type="checkbox"/>
CABIN		Prolongation Telematics for 1 additional year	<input type="checkbox"/>
Auxiliary heating with timer and temperature preselection	<input type="checkbox"/>	Active cyclone prefilter (Top Air)	<input type="checkbox"/>
Cabin with bullet proof glass front and above	<input type="checkbox"/>	Individually controllable 4-point outriggers	<input type="checkbox"/>
Horizontal und vertical hydraulically adjustable cabin	<input type="checkbox"/>	Extended outrigger plates (for reduced surface pressure)	<input type="checkbox"/>
FOPS-top guard for the cab's roof	<input type="checkbox"/>	Central greasing system for undercarriage · manually	<input type="checkbox"/>
		Central greasing system for undercarriage · automatic	<input type="checkbox"/>
		Increased corrosion protection (cabin, covers, steel construction)	<input type="checkbox"/>

* (230V-50Hz by external power supply)

A series of horizontal lines for writing.





GET A HANDLE ON FLEET MANAGEMENT.

Fuchs Telematics System: Recognize and Optimize Potential.

The Fuchs Telematics system: know exactly how and where everything is running.

The system offers a modern solution to help you analyze and optimize the efficiency of your machines. It records and communicates valuable information on the operating status of each individual machine. Where are the machines? How are they working? Is a service check pending? Take advantage of this advanced software and get a handle on your fleet management with the tool that connects for you.

ALL-IN-ONE MACHINE MANAGEMENT. EVERYTHING AT A GLANCE: OPERATING DATA, MACHINE STATUS, GPS DATA

Record, display, and analyse data: high efficiency through precise information

- Available online anywhere and at any time*: comprehensive information on the GPS location, start and stop times, fuel consumption, operating hours, maintenance status, and much more.
- User-friendly interface: displays information clearly for at a glance metrics and diagnostics. Take action before damage occurs: predetermined maintenance intervals are signaled and error messages are displayed in plain text messages.
- The Fuchs Telematics system is optionally available or can be retrofitted into existing machines to help control your operating costs and keep your machines in top shape.

* Internet connection required

